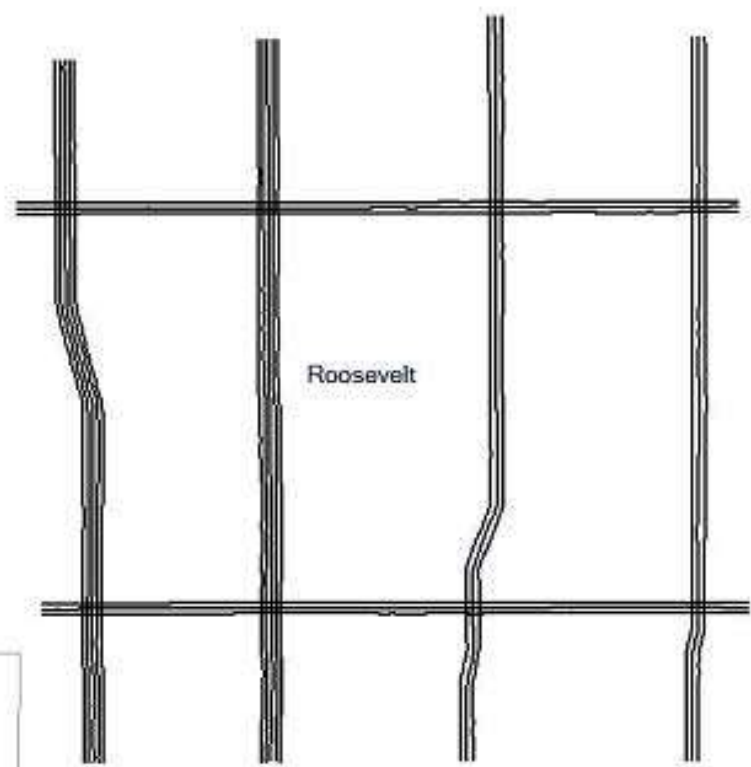




777 S. Fry Suite 200 - Houston, TX 77450  
FOR SALES CONTACT  
O/832.379.9400 - sales@baileyseismic.com  
BAILLEYSEISMIC.COM



***Roosevelt County Swath Survey  
New Mexico***

Yoakum

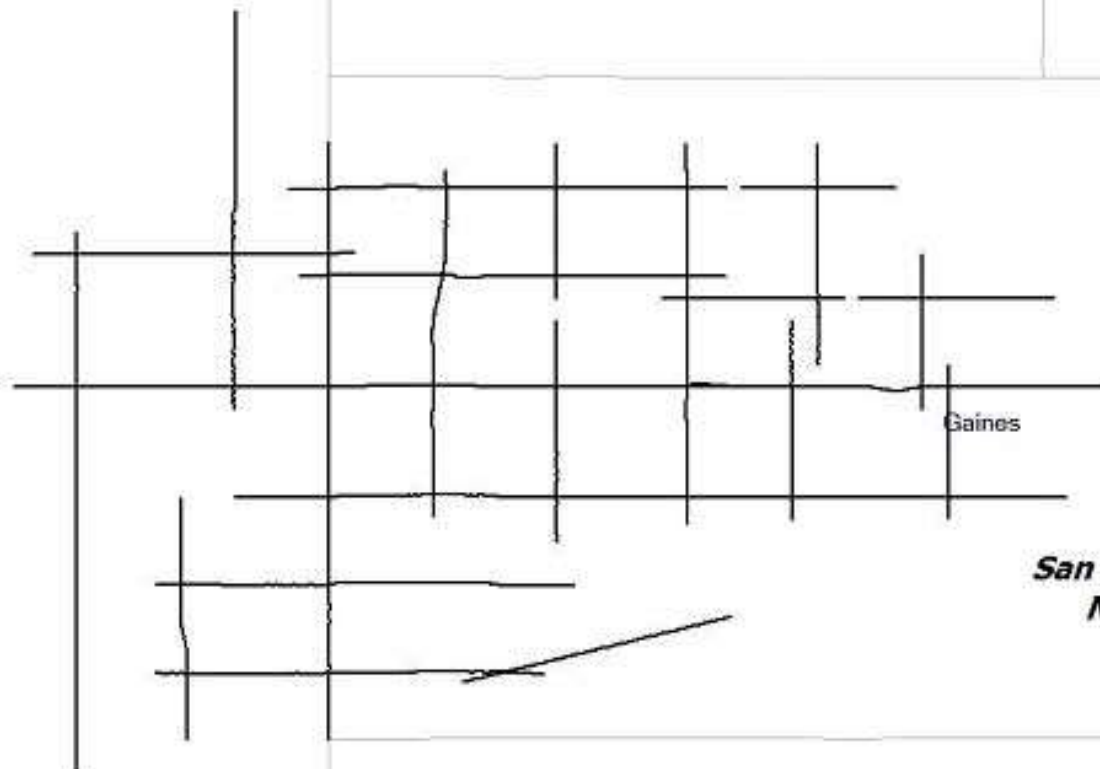
BAILEY BANKS SEISMIC



777 S. Fry Suite 200 - Houston, TX 77450  
FOR SALES CONTACT  
0/832.379.9400 · sales@baileyseismic.com  
BAILEYSEISMIC.COM

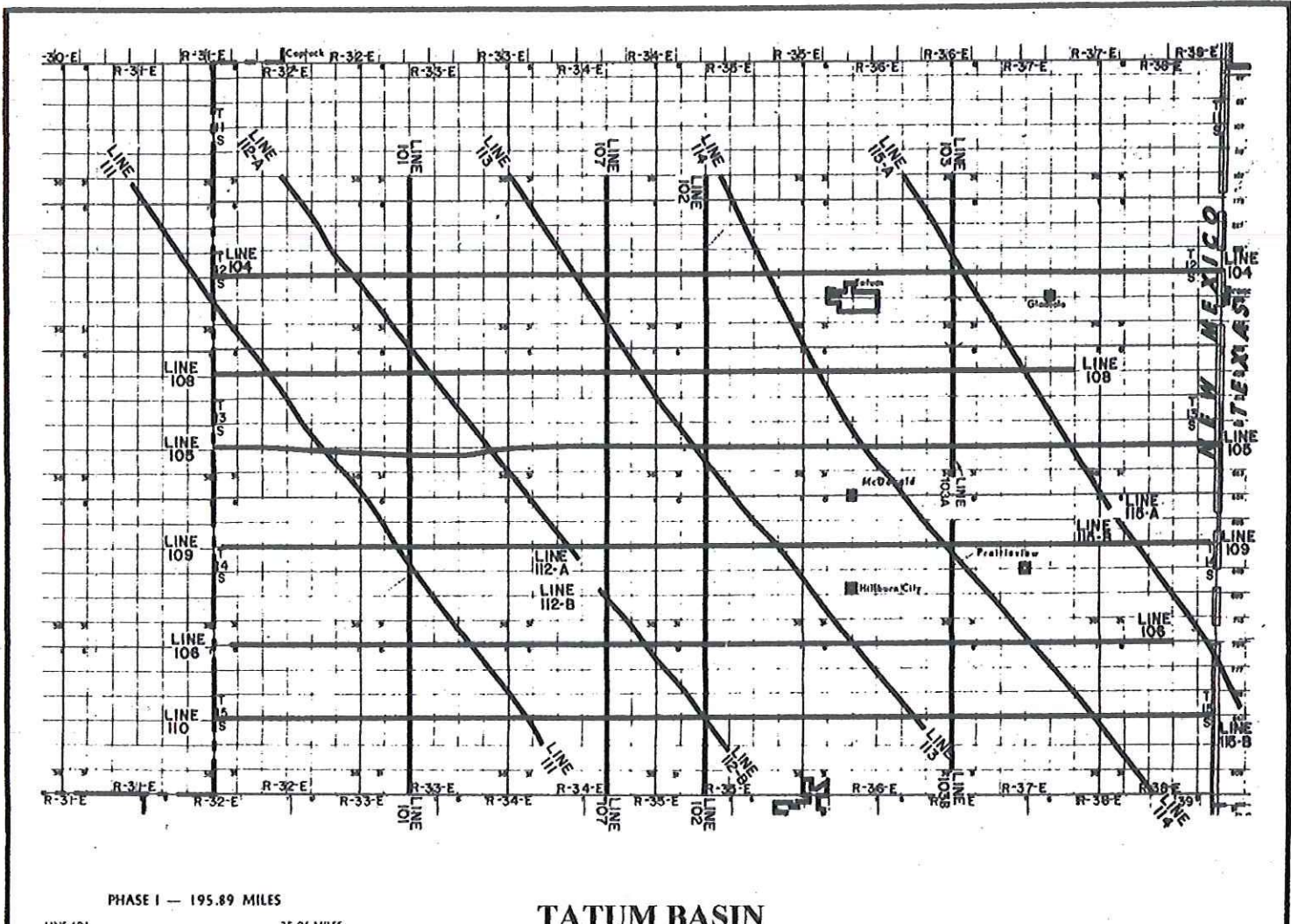


Lea



Gaines

***San Simon Channel Survey  
New Mexico-Texas***



**PHASE I — 195.89 MILES**

LINE 101	25.06 MILES
LINE 102	24.97 MILES
LINE 103	7.88 MILES
LINE 103A	7.84 MILES
LINE 103B	9.95 MILES
LINE 104	40.93 MILES
LINE 105	40.91 MILES
LINE 106	38.35 MILES

**PHASE II — 141.00 MILES**

LINE 107	25.02 MILES
LINE 108	34.89 MILES
LINE 109	40.45 MILES
LINE 110	40.64 MILES

**PHASE III — 138.52 MILES**

LINE 111	28.35 MILES
LINE 112A	19.70 MILES
LINE 112B	8.32 MILES
LINE 113	27.94 MILES
LINE 114	30.82 MILES
LINE 115A	15.31 MILES
LINE 115B	8.08 MILES

**TATUM BASIN  
HIGH RESOLUTION SEISMIC SURVEY  
Lea County, New Mexico**

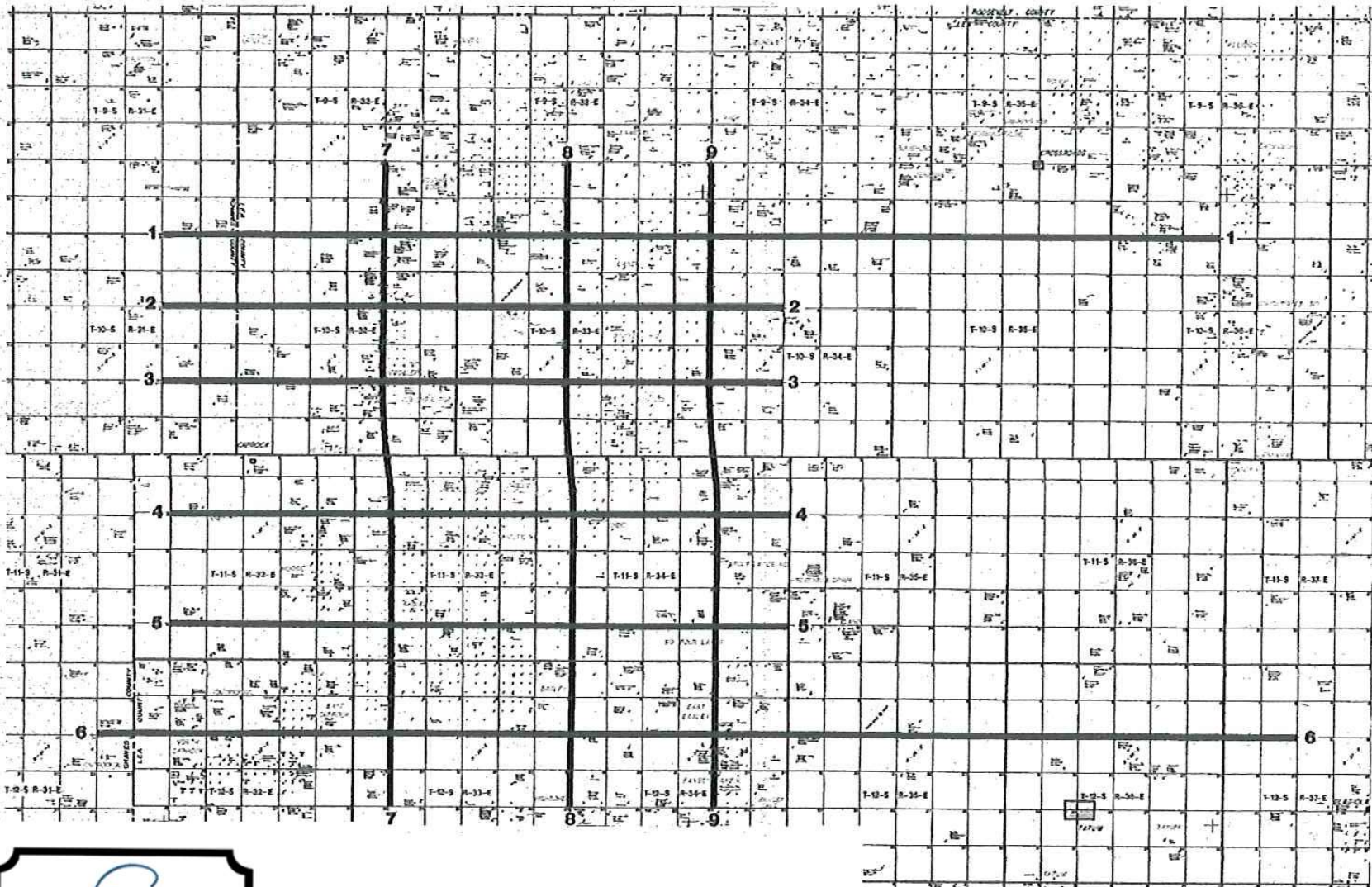


**BAILEY BANKS SEISMIC**

777 S. Fry Suite 200 · Houston, TX 77450  
FOR SALES CONTACT  
0/832.379.9400 · sales@baileyseismic.com  
[BAILEYSEISMIC.COM](http://BAILEYSEISMIC.COM)







**BAILEY BANKS SEISMIC**

777 S. Fry Suite 200 - Houston, TX 77450

FOR SALES CONTACT

0/832.379.9400 - sales@baileyseismic.com

BAILEYSEISMIC.COM



**Mileage**

- Line-1-----28.91 Miles
- Line-2-----18.37 Miles
- Line-3-----20.93 Miles
- Line-4-----16.49 Miles
- Line-5-----19.89 Miles
- Line-6-----22.63 Miles
- Line-7-----17.45 Miles
- Line-8-----17.48 Miles
- Line-9-----17.51 Miles

Total-----160.73 Miles

**SCALE**

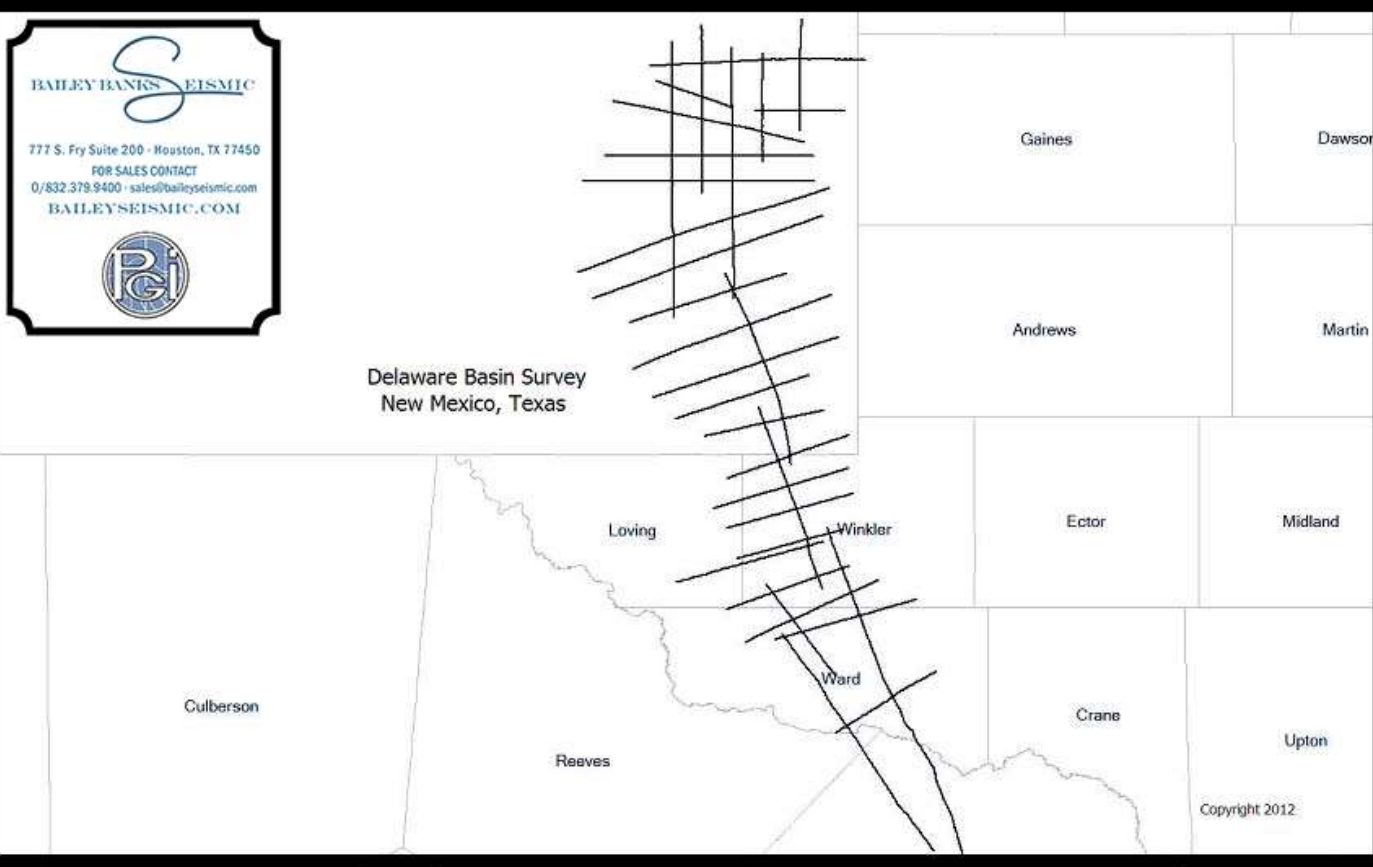


Professional Geophysics Incorporated

**TATUM BASIN NORTH  
HIGH RESOLUTION SEISMIC SURVEY**

Lea & Chaves Counties, New Mexico

NOV 2008



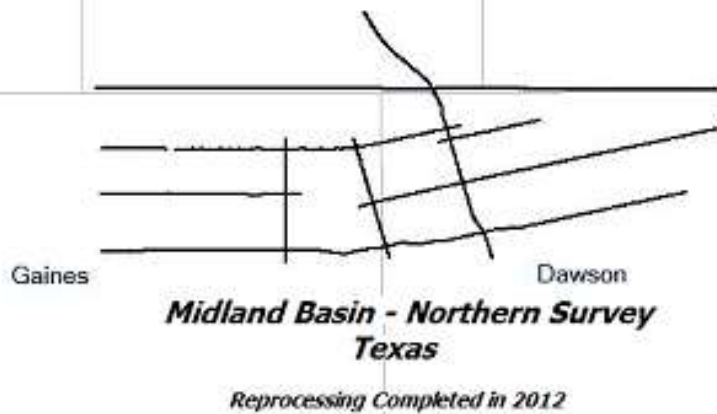
BAILEY BANKS SEISMIC

777 S. Fry Suite 200 - Houston, TX 77450  
FOR SALES CONTACT  
0/832.378.9400 - sales@baileyseismic.com  
BAILEYSEISMIC.COM



Delaware Basin Survey  
New Mexico, Texas

Copyright 2012



**BAILEY BANKS SEISMIC**

777 S. Fry Suite 200 - Houston, TX 77450  
FOR SALES CONTACT  
0/832.379.9400 · sales@baileyseismic.com  
[BAILEYSEISMIC.COM](http://BAILEYSEISMIC.COM)



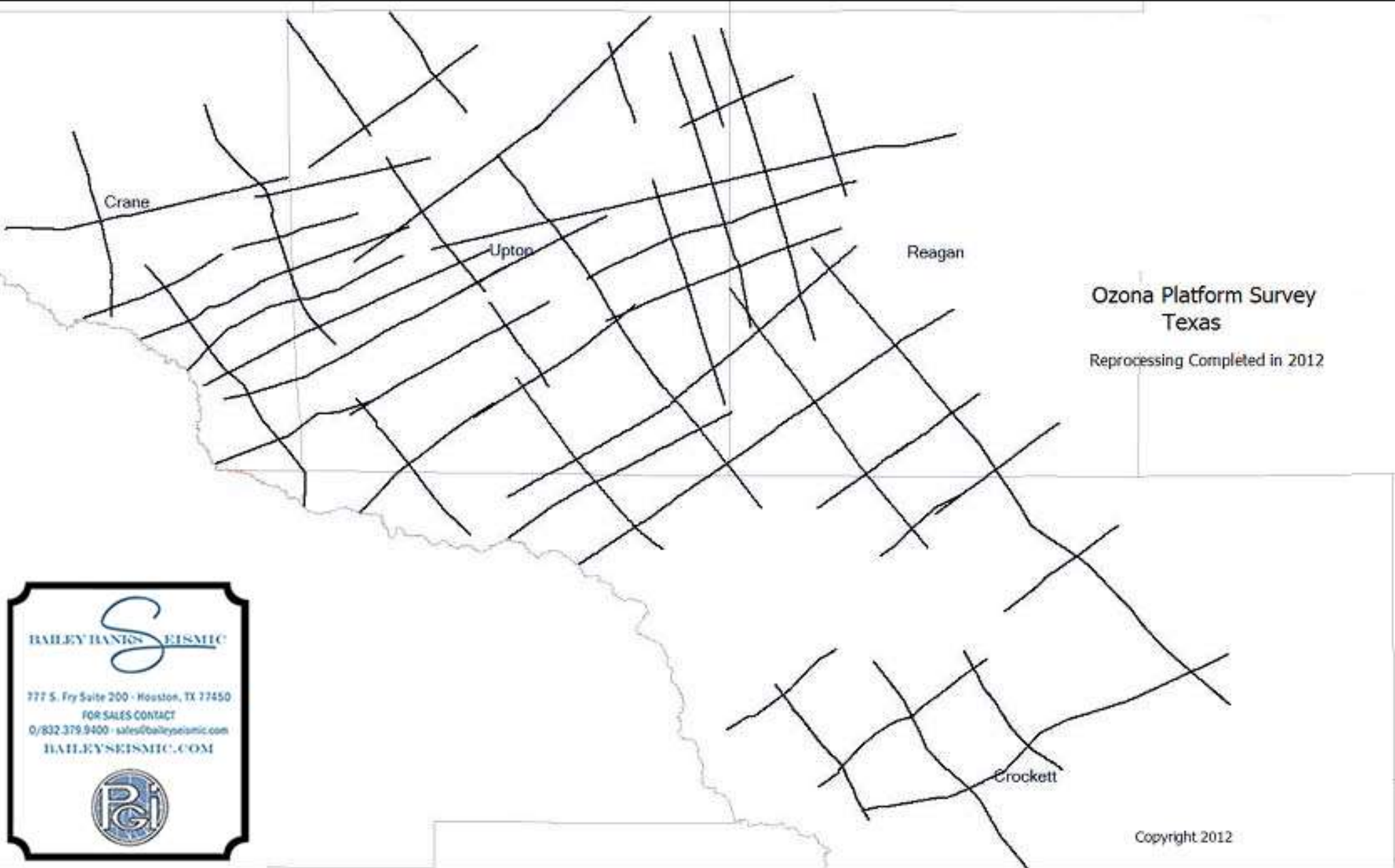

Winkler

Sterling

Ward

Copyright 2012





Ozona Platform Survey  
Texas

Reprocessing Completed in 2012

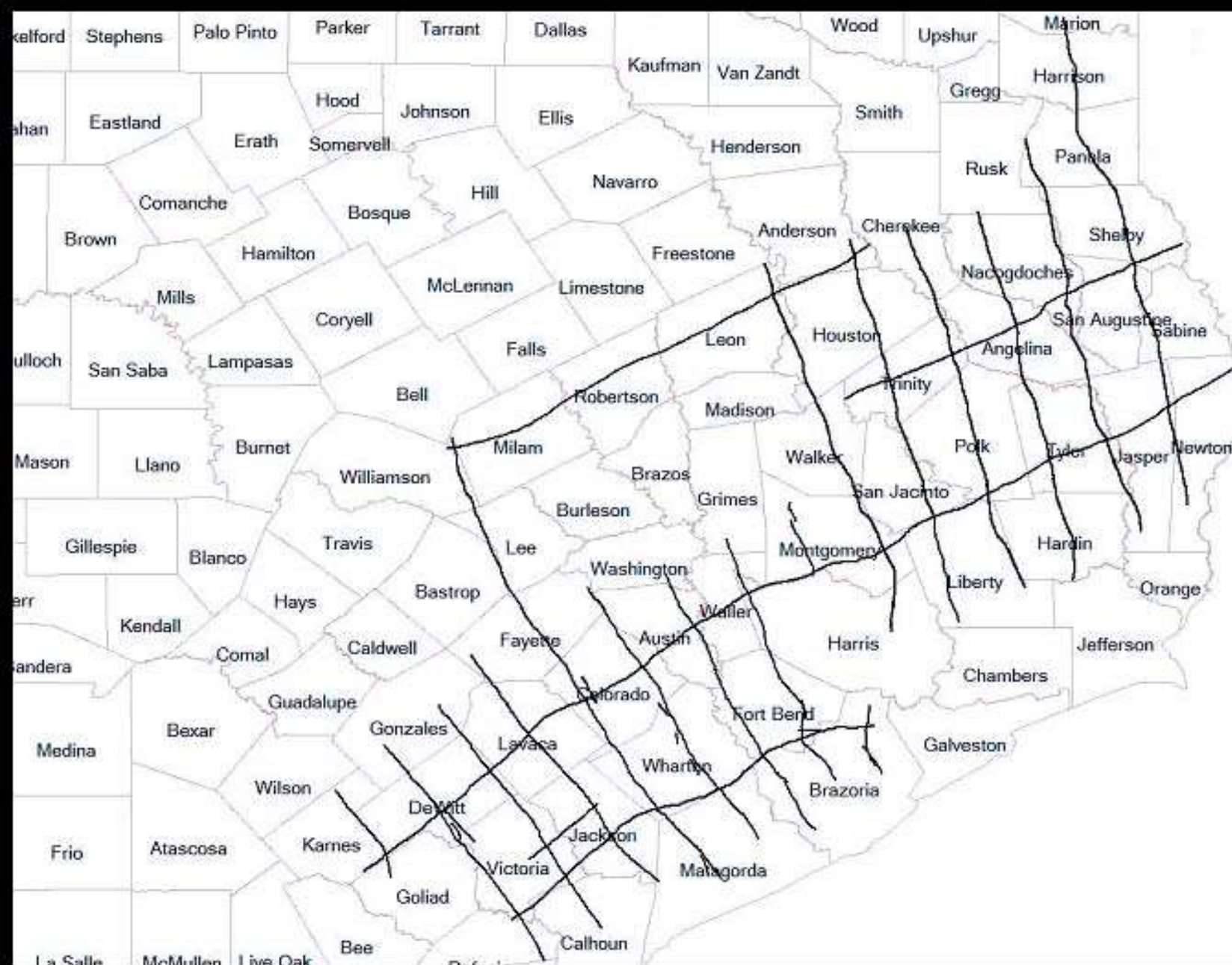
**HAILEY HANTS SEISMIC**

777 S. Fry Suite 200 - Houston, TX 77450  
FOR SALES CONTACT  
0/832.379.9400 - sales@haileyseismic.com  
HAILEYSEISMIC.COM



Copyright 2012



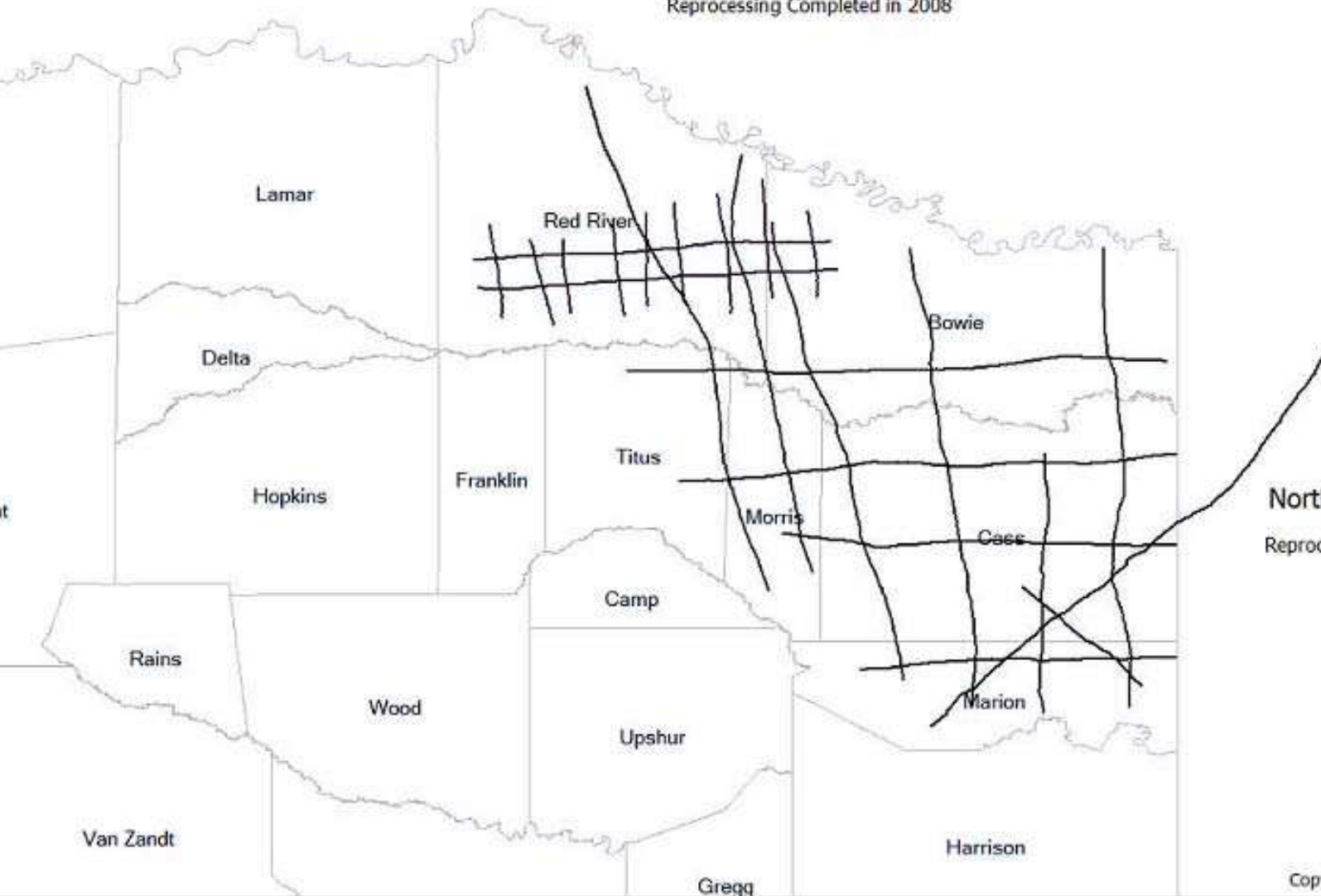


  
**BAILEY BANKS SEISMIC**  
 777 S. Fry Suite 200 - Houston, TX 77450  
 FOR SALES CONTACT  
 0/832.379.9400 - sales@baileyseismic.com  
 BAILEYSEISMIC.COM  


***East Texas Survey***  
*Reprocessing Completed in 2008*

## Northeast Texas Jurassic Survey

Reprocessing Completed in 2008



## Northeast Texas Survey

Reprocessing Completed in 2008

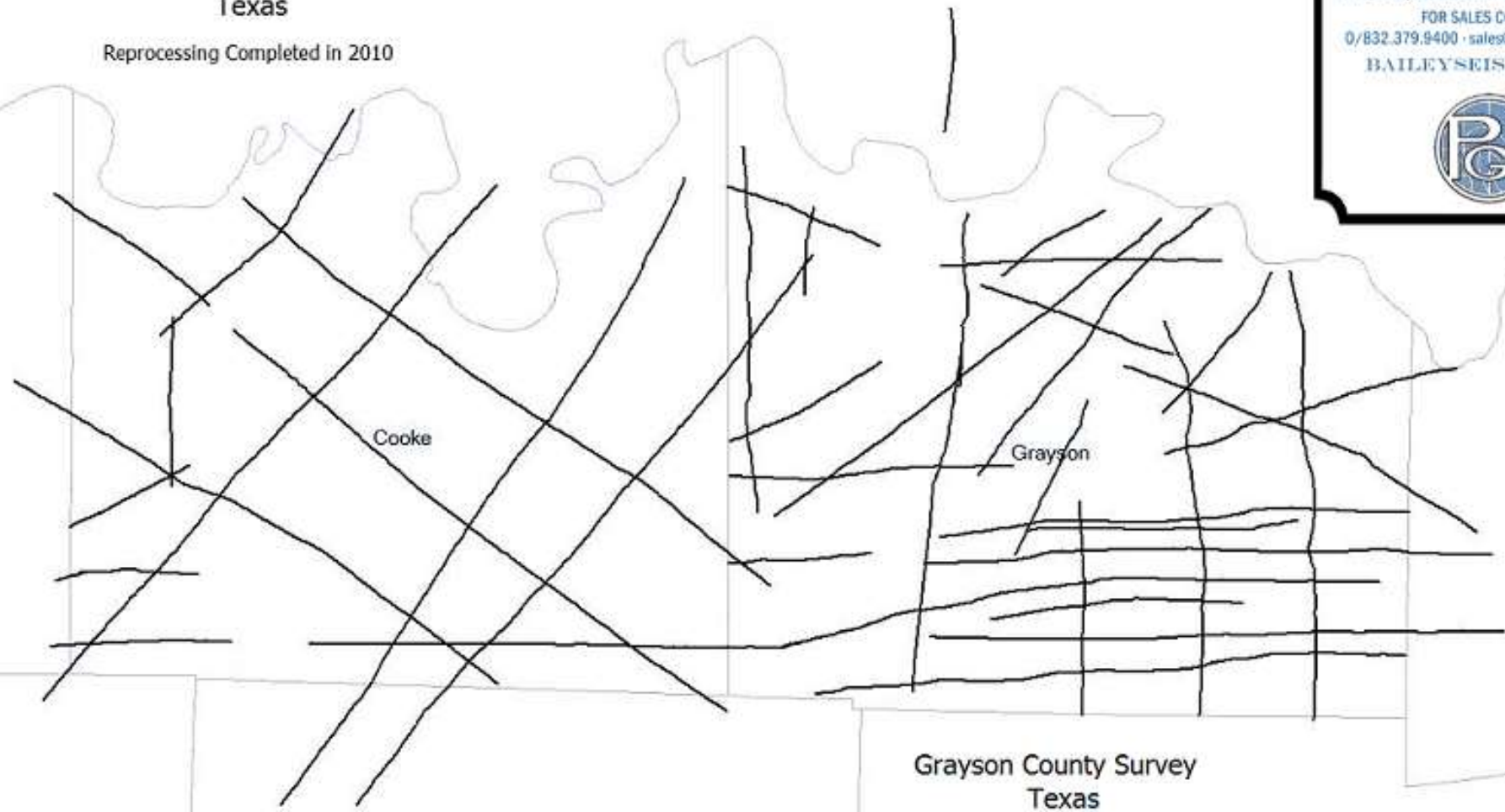


777 S. Fry Suite 200 - Houston, TX 77450  
FOR SALES CONTACT  
0/832.379.9400 - sales@baileyseismic.com  
BAILEYSEISMIC.COM



Cooke County Survey  
Texas

Reprocessing Completed in 2010



Cooke

Grayson

Grayson County Survey  
Texas

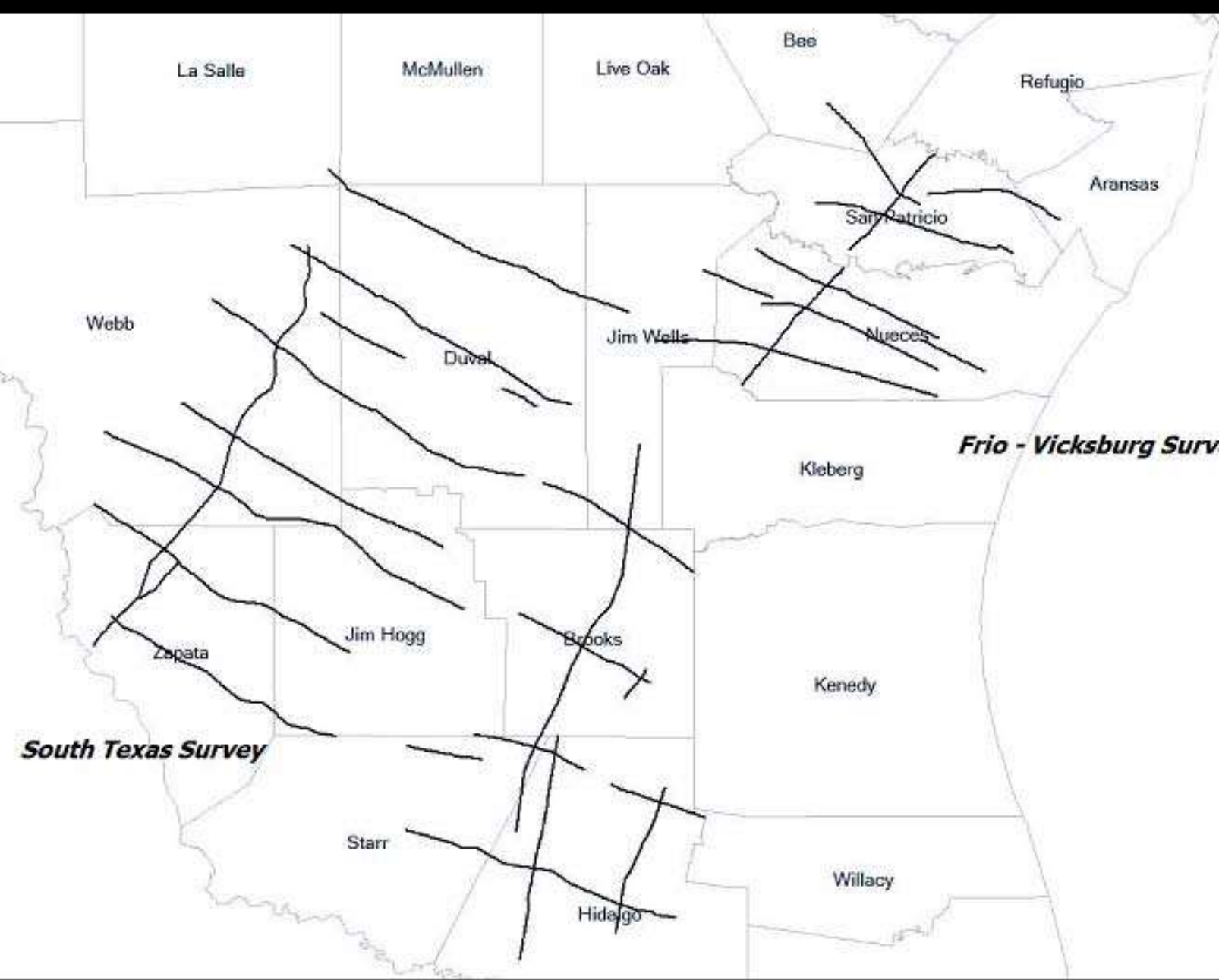
Reprocessing Completed in 2010

**BAILEY BANKS SEISMIC**

777 S. Fry Suite 200 · Houston, TX 77450  
FOR SALES CONTACT  
0/832.379.9400 · sales@baileyseismic.com  
BAILEYSEISMIC.COM

Copyright 2012





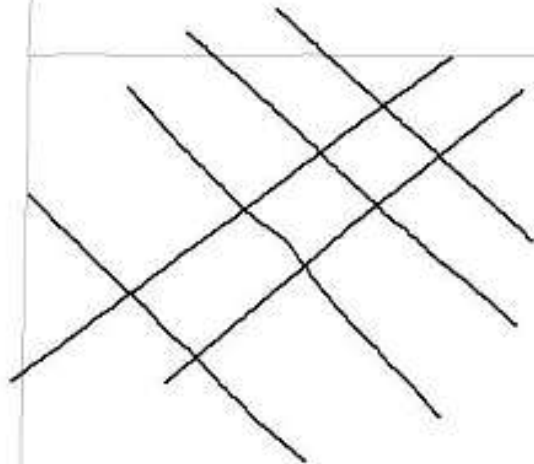
**BAILEY BANKS SEISMIC**

777 S. Fry Suite 200 - Houston, TX 77450  
FOR SALES CONTACT  
0/832.379.9400 • sales@baileyseismic.com  
[BAILEYSEISMIC.COM](http://BAILEYSEISMIC.COM)



Cochran

***Yoakum County Survey  
Texas***



Yoakum

BAILEY BANKS SEISMIC  


777 S. Fry Suite 200 · Houston, TX 77450

FOR SALES CONTACT

0/832.379.9400 · sales@baileyseismic.com

BAILEYSEISMIC.COM



Terry

Copyright 2012